



University of Malta  
L-Università ta' Malta



Eurogeo

# APPLYING SUSTAINABILITY THROUGH GEOGRAPHY

**DR MARIA ATTARD**

Lecturer in Geography and Director,  
Institute for Sustainable Development,  
University of Malta

# Geography as a Discipline

- Ability to integrate human and physical aspects
- Increasingly interdisciplinary
- Successful use and adoption of technology in its methods
- Sub-disciplines within Geography becoming increasingly relevant



# The importance of Interdisciplinarity

- Many issues are too complex to be dealt with without an interdisciplinary approach, for example climatic change, nature conservation, demography and disaster relief.
- Integration is the only way to deal with such complex problems. However, in a scientific community where every discipline raises protective boundaries, Geography offers an interdisciplinary base to address such issues and concerns that are being faced.
- Education for interdisciplinarity is vital if people are to understand the world in which they live and the impacts they have on it.

Sibiu Declaration on Interdisciplinarity Oct 2007



Eurogeo Seminar and Annual Meeting **Sustainable Geographies**  
Charles University, Prague, Czech Republic

8<sup>th</sup> May 2010



# Recommendations for Interdisciplinarity

- Interdisciplinarity needs to play a major role in education and training in preparing our scientists to work together and for decision makers to understand the implications of our actions.
- We need to focus on the types of education and research environments that promote and support interdisciplinarity.
- We must not be afraid to establish courses and programmes that meet interdisciplinary issues through integrated thinking, thereby transforming the learning and education process.

**Sibiu Declaration on Interdisciplinarity Oct 2007**



Eurogeo Seminar and Annual Meeting **Sustainable Geographies**  
Charles University, Prague, Czech Republic

8<sup>th</sup> May 2010



# Institute for Sustainable Development

- Based at the University of Malta.
- Officially launched by the Prime Minister in January 2010
- Promotes interdisciplinary research and the use of technologies such as Geographic Information Systems (GIS)

[www.um.edu.mt/isd](http://www.um.edu.mt/isd)



Eurogeo Seminar and Annual Meeting **Sustainable Geographies**  
Charles University, Prague, Czech Republic

8<sup>th</sup> May 2010



# Role of Geography

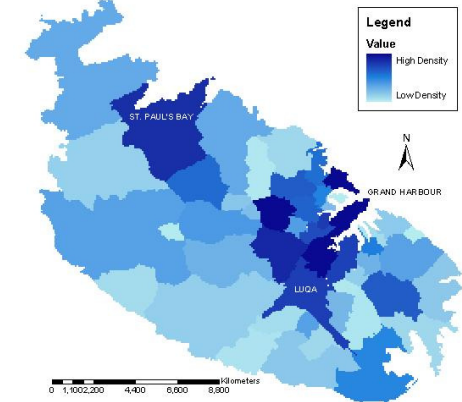
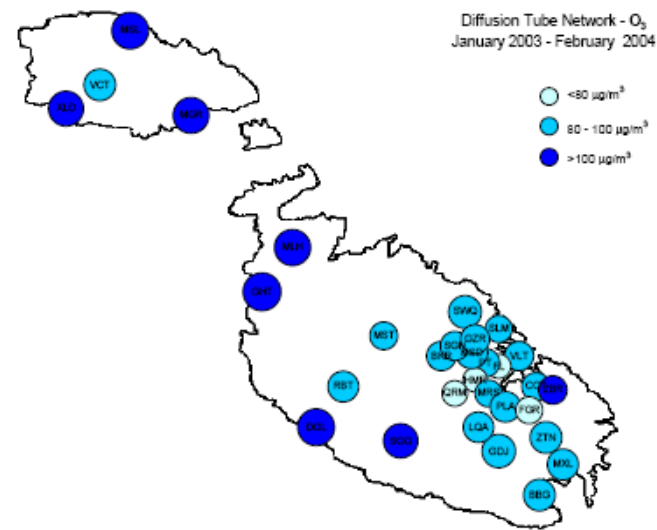
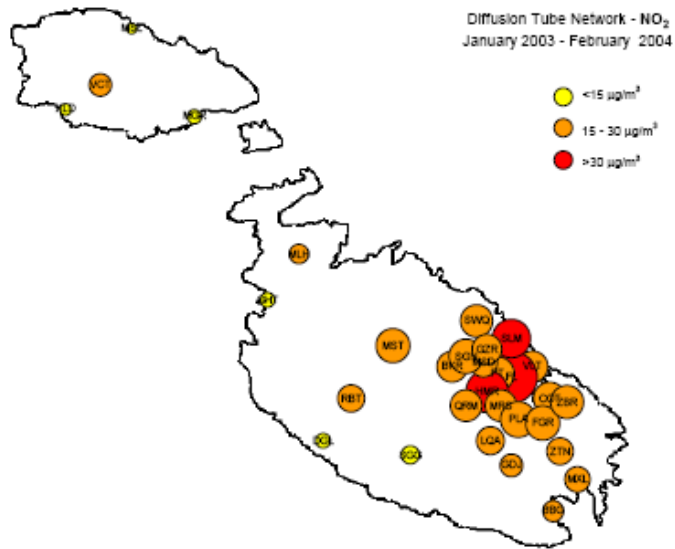
- Geography is the foundation for projects within the ISD
- Research has to be driven by relevance towards the Institute's objectives and the country's economic development
- Research encouraged from industry and government alike
- Partnerships with gov and industry sought



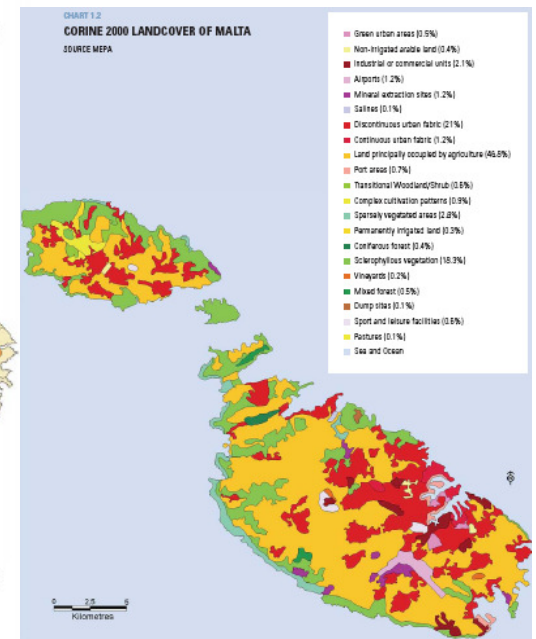
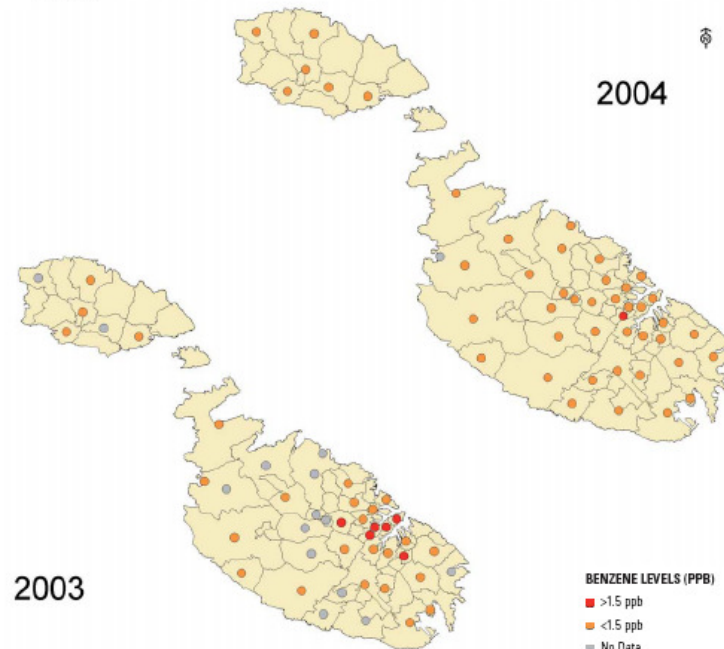
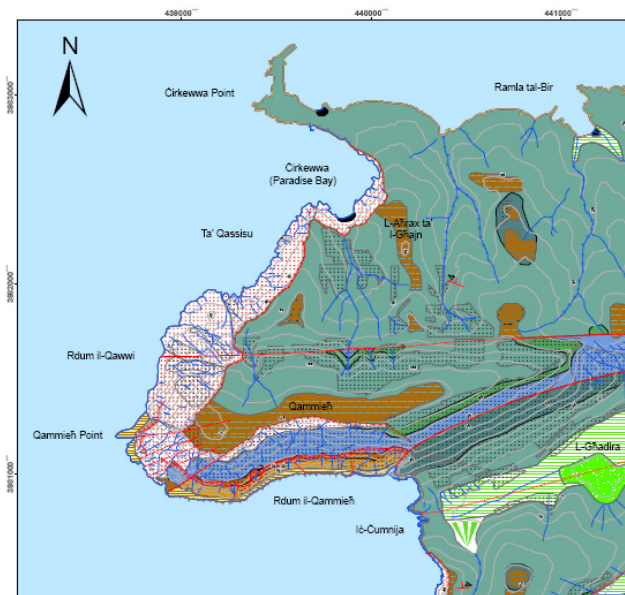
# The WebGIS Project

- A project aimed at servicing the policy making and strategy sectors by providing free spatial data (published official data and unpublished research data).
- A web-based portal for Malta related spatial data.
- Aim to establish it and a number of spin off services are developed to make it sustainable.





URCE MEPA



Eurogeo Seminar and Annual Meeting **Sustainable Geographies**  
Charles University, Prague, Czech Republic  
8<sup>th</sup> May 2010



# Campus GIS

- Based on the same principles of the WebGIS project.
- Aims to provide a service within the University.
- Aims to bring together various experts to put together geographic information and tools to increase information access at the University of Malta.



- ▶ About
- ▶ Staff
- ▶ Publications



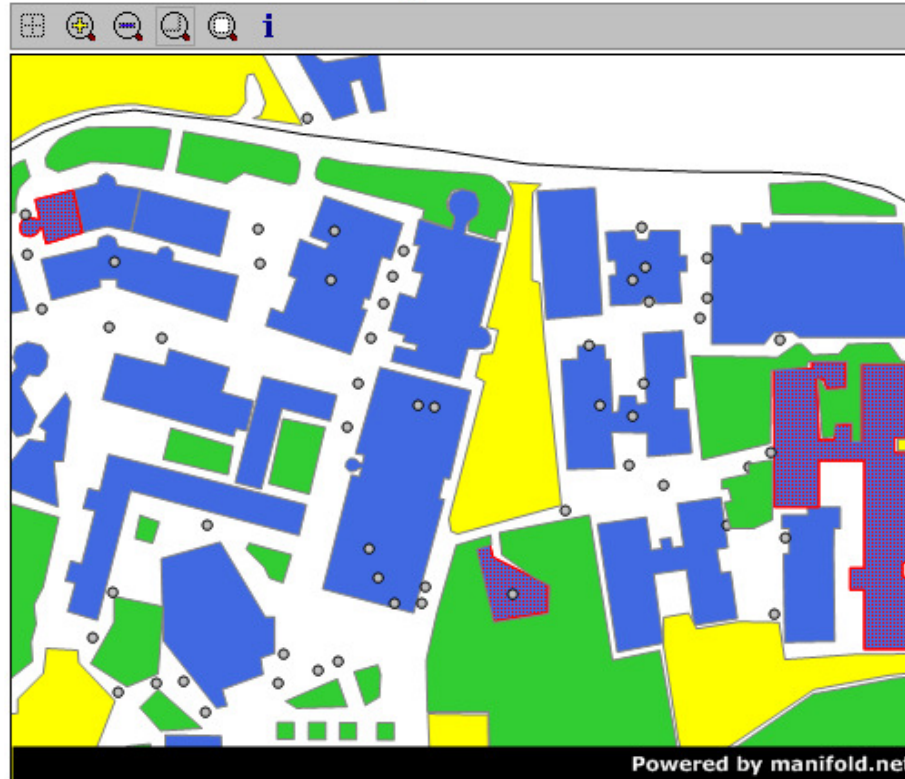
Find - Windows In... [min] [max] [close]

http://193.188.45.244/table

Name
Biology & Medical Science Building
Science Lecture Theatre
Institute of Forensic Science

Internet | Protected Mode: [status]

## UoM Interactive Map



**Find**

Find:

Within:

- Layers**
- Banks Drawing
  - CSC Labs Drawing
  - Carparks Drawing
  - Disabled Access Drawing
  - Green Areas Drawing
  - Information Points Drawing
  - Other Parking Drawing
  - Roads Drawing
  - Sports Facilities Drawing
  - Stairs Drawing
  - Wireless Access Points Drawing
  - Buildings Drawing
- 

Zoom Box

Copyright (C) 2008. All rights reserved.

Powered by manifold.net

Internet | Protected Mode: [status]



Eurogeo Seminar and Annual Meeting **Sustainable Geographies**  
 Charles University, Prague, Czech Republic

8<sup>th</sup> May 2010



# Research

- Institute to establish a forum for interdisciplinary research in Malta
- Research that is relevant and adopts technology
- Research that promotes sustainability
- Institute to act as think-tank for policy, supported by projects and research



# Future of Geography

- It is important to retain Geography as a core subject in curricula and universities
- However it needs to broaden its views on issues of sustainability that are too complex
- Opportunities for interdisciplinary research should be taken in order to promote Geography



any questions, comments,  
ideas?

maria.attard@um.edu.mt



Eurogeo Seminar and Annual Meeting **Sustainable Geographies**  
Charles University, Prague, Czech Republic

8<sup>th</sup> May 2010

